

# FACTORY DESIGN DISTRICT

FRIDAY 3 – SUNDAY 5 JUNE 2016, DAILY FROM 11AM



FACTORYDESIGNDISTRICT.COM

EXHIBITIONS, TALKS, DEMONSTRATIONS, FOOD AND DRINK  
HOSTED AT COMMUNE MAKERS, 901 BOURKE STREET WATERLOO

FREE ENTRY : REGISTER ONLINE OR AT THE DOOR  
AUTHENTIC DESIGN LIFTOUT PRODUCED BY ADA

OVER 30 LOCAL  
PRODUCERS, MAKERS  
AND DESIGNERS

INCLUDING DINOSAUR DESIGNS, MUD AUSTRALIA,  
YOUNG HENRYS AND MORE.

SEE, LEARN, CONSUME.

In partnership with



Vivid Contributor



# + MENU

+  
**BLOODWOOD**

PICKLED QUINCE, FENNEL AND CANDIED WALNUT SALAD

+  
**CONTINENTAL DELI**

POTATO & LEEK SOUP  
CHICKEN NOODLE SOUP

+  
**O TAMA CAREY**

SRI LANKAN HOPPER WITH BLACK MUTTON CURRY AND POL SAMBOL.  
Hoppers are a savoury fermented rice flour and coconut milk pancake, crispy and lace like on the edges with a delicate soft middle. The sambol is made from fresh coconut.

+  
**RISING SUN WORKSHOP**

BANH MI  
"PORKY"  
Grilled pork belly, pork & lemongrass terrine, pâté, pickles, coriander, chilli & mayo  
"FU"  
Black pepper tofu, mushroom pâté, sherry soy pickles, mayo, chilli & coriander

+  
**MECCA COFFEE**

COFFEE, DRINKS AND BAKED TREATS FROM BRICKFIELDS

+  
**URBAN WINERY SYDNEY**

2014 A.RETIEF SAUVIGNON BLANC  
2013 A.RETIEF BIO-DYNAMIC ROSE  
2013 A.RETIEF FIELD BLEND RED  
2013 A.RETIEF BIO-DYNAMIC SHIRAZ

+  
**YOUNG HENRYS BREWING COMPANY**

NEWTOWNER

Made to celebrate 150 years of Newtown.  
A golden, refreshing pale ale with great balance and hoppy aroma. Drinks all day, every day.

CLOUDY APPLE CIDER

With a blend of Royal Gala and Pink Lady apples, this unfiltered cider tastes of pure apple goodness. No added sugar, syrups, water or trickery.

NOBLE CUT GIN & TONIC

A New World Australian gin, introducing techniques and flavours from both brewing and distillation. Our handmade 100% wheat spirit is cut from the grain up, and infused with Enigma hops, native Australian botanicals bush tomato and pepperberry, and locally grown Sencha green tea. Served with Capi tonic, a wedge of fresh grapefruit and a sprig of thyme.

# CONTENTS



In an industry that is continually evolving, a new appreciation for the soulful craftsmanship of designer/makers and design manufacturers is heralding a shift in consumer behaviour. A growing demand for bespoke or customisable design has put the spotlight directly on Australia's population of dedicated and skilled makers.

Factory Design District is a new Sydney event with over 30 presentations of authentic, collaborative and Australian product – from food to furniture, coffee to ceramics. It is 100% independent and dedicated to the Australian design and manufacturing industry.

Factory Design District puts its focus on authentic, original design that is innovative, locally made and both economically and environmentally sustainable. All participating exhibitors are of the highest quality and hold these values at the core of their business.

In contrast to other existing design exhibitions, Factory Design District presents wholly Australian design and production in a highly curated environment.

Words like "bespoke" or "custom" can conjure images of expense and unattainability but this is not always the case. If we have items in our home, workplace and hospitality venues that are truly made for purpose, with care, by experienced producers, we will need to own fewer objects and purchase less often.

With this event, I hope to encourage design professionals as well as design enthusiasts to seek out that connection with a maker that will enable them to own or specify products with longevity, quality and usefulness.

**Kobe Johns**

**Creative Director, Factory Design District  
Co-Founder JP Finsbury**

**MAKER MEDITATIONS 4**

**PARTNERS AND CONTRIBUTORS 6**


**PLAN AND TALKS & EVENTS 8**

**ESTABLISHED 10**

**EXHIBITORS 12**

COPYRIGHT © 2016. PUBLISHED BY FACTORY DESIGN DISTRICT. CREATIVE DIRECTOR: KOBE JOHNS. EDITOR: PENNY CRASWELL. GRAPHIC DESIGNER: DANNY WEHBE. PRODUCTION COORDINATOR: BELINDA HUNGERFORD. SYDNEY, AUSTRALIA. FACTORYDESIGNDISTRICT.COM

COVER PHOTO BY ANSON SMART, COURTESY MUD AUSTRALIA



# + MAKER MEDITATIONS

**PROVIDING AN ALTERNATIVE TO HOMOGENOUS, MASS PRODUCED GOODS, MAKERS ARE INCREASINGLY BEING SOUGHT OUT BY CONSUMERS, RETAILERS AND BIG BUSINESS TO CREATE HIGH QUALITY, LOCALLY-MADE DESIGNS THAT ARE UNIQUE AND FULL OF CHARACTER. PENNY CRASWELL INVESTIGATES THREE COLLABORATIONS THAT HIGHLIGHT THE VALUE OF HAND MADE.**

+ For thousands of years, every object was hand made, by artisans, by blacksmiths, by carpenters, weavers and potters – there was no other mode of making. Then came industry, mass manufacturing and globalisation, offering new types of products and materials – such as plastics, synthetic fabrics and consumer electronics – ultimately putting low cost, high volume goods on our shelves. Now, the work of artisans and craftspeople is gaining in value again, offering the appeal of locally-produced items with a transparency of process and materials that answers consumers' questions about the origins of products and their impact on the environment.

+ The truth is, an object you have made yourself, or an object that was made by a local artisan, is ultimately much more appealing than the ubiquity of off-the-shelf products. And it's not just everyday consumers who are tapping into this appeal – retailers, high-end customers and big business are getting in on the act too.

## **The Fortynine Studio creates bespoke objects for Mirvac's new workplace**

Increasingly, the most high tech and forward-thinking of workplaces are embracing the aesthetics of home, recognising that people feel calm, creative and happy in residential-type environments. Interior designers at Davenport Campbell, when designing a new agile workplace pilot project for Mirvac in Sydney, were able to create this sense of home by commissioning Ben Elbourne, Sarah Spackman and Harriet Watts of The Fortynine Studio to create some hand-crafted pieces for the interiors.

Recognising that one of the most important elements was to get the detailing right, Davenport Campbell had already been in touch with The Fortynine Studio to obtain several of Ben Elbourne's Banksia Lights, which were dotted throughout a shelving system that runs along the workspace. From here, a collaboration grew which eventually saw The Fortynine Studio design, develop and make a series of interior plant pots in clay, as well as fixtures and fittings such as handspun copper pencil holders and hooks. "The pots were developed through experimentation with flop moulding and slab forming techniques," explains Harriet Watts. "Each pot is hand formed using local terracotta clay and features hand painted slip decoration and a unique set of feet, adding to their individual character."

The response to the workplace has been overwhelmingly positive according to post-occupancy findings conducted by Mirvac, with these hand-made pieces providing an added level of details and craftsmanship that contributes to the residential feel of the space.



**Dresden Optics reinvents eyewear with a recycled plastic frame designed by Andrew Simpson**

Founders of Dresden Optics, frustrated glasses wearers Bruce Jeffreys and Jason McDermott, have launched a new range of eyewear that is disrupting the optometry industry, with help from industrial designer Andrew Simpson of Vert. Their first task was to design a universal glasses frame that looks good on everyone. They also worked with many different kinds of materials and settled on plastic, recycling plastic waste to create a lightweight and strong frame. "One of Andrew's great talents is exploring how materials are used," Bruce says. "For us, that meant that together we were able to investigate new materials, such as plastic waste. It struck us that glasses are a visible way of demonstrating how you use plastics – and this is a great advertisement for recycling."

The result is a flexible, lightweight, plastic glasses frame that is interchangeable in three standard sizes and can be made while you wait, starting from as low at \$49. The final product can even be created on site in their store from discarded plastic waste, allowing for an unusual collaboration with local brewery Young Henrys. "The guys from Dresden got in contact with us last year wanting to do a collaborative frame and we thought it was a pretty cool idea," says Oscar McMahon from Young Henrys. "They ended up melting down a bunch of our Natural Lager keg caps to make a pretty cool green-rimmed frame. It's always nice working with inspired humans who think a little outside the usual

square."

**Designer Trent Jansen collaborates with timber joiner JP Finsbury on the Chinaman's File chair**

The collaborative relationship that designers have with craftspeople allows for an investigative process of experimentation, with high end, bespoke design pieces pushing the boundaries of materials and innovation. Sydney-based designer Trent Jansen and timber expert and joiner Adam Price from JP Finsbury explored some of the possibilities of timber in a rocking chair called Chinaman's File. The work is part of Broached Commissions, a project in which designers respond to aspects of Australian history to create innovative, limited edition pieces. This work was inspired by the history of Chinese gold diggers who came to the Victorian gold fields during the 19th Century and were forced to walk hundreds of miles so ships could avoid taxes collected for every Chinese person on board. It is realised as a timber rocking chair symbolising the comfort denied to these men.

The work is technically complex and, while Trent provided detailed technical drawings of the chair, it was Adam's expertise in timber that helped to refine the design. In particular, this expertise helped to resolve a stainless steel knuckle joint that is embedded into the timber underside of the rocking surface. "Making it so that those junctions are beautifully refined, but also function in timber is quite tricky," explains Trent. "We're talking less than 1mm shadowline so if it warps, it doesn't work. If it's not made with absolute perfection, those joints can start to rub." The result is a beautiful object made through a process of collaboration and refinement. "It's always good speaking to Adam who has a really good intuitive understanding of timber. I have a more general understanding of a wide range of materials but I always speak to craftspeople before I finalise a design now," says Trent.



# + PARTNERS



## VIVID SYDNEY

Vivid Sydney is a festival of light, music and ideas – the largest of its kind in the world. From May 27 to June 18, 2016, the event will transform the Harbour City into a colourful creative canvas. Now in its eighth year, Vivid Sydney is owned, managed and produced by Destination NSW, the NSW Government's tourism and major events agency, and features large-scale light installations and projections (Vivid Light); music performances and collaborations (Vivid Music including Vivid LIVE at the Sydney Opera House); and creative ideas, discussion and debate (Vivid Ideas); all celebrating Sydney as the creative hub of the Asia-Pacific region. For more information visit

[vividssydney.com/ideas](http://vividssydney.com/ideas)



## ADA

Australia is seen as one of the worst offenders when it comes to fake designer furniture! UK, Europe and other territories have now introduced laws protecting original designs for 70 years after the originator's death, the UK enforcing penalties of up to 10 years jail, and 50K GBP for anyone importing, selling or promoting fake designer furniture. AUTHENTIC DESIGN ALLIANCE is a members-based education platform advocating original design, and lobbying for radical changes to Australian IP law to increase protection for our designers – aiming to align with our European counterparts. ADA events spotlight the real cost of knock-offs, fakes and copies, explaining how purchasing counterfeit designs is killing the future of our own design industry

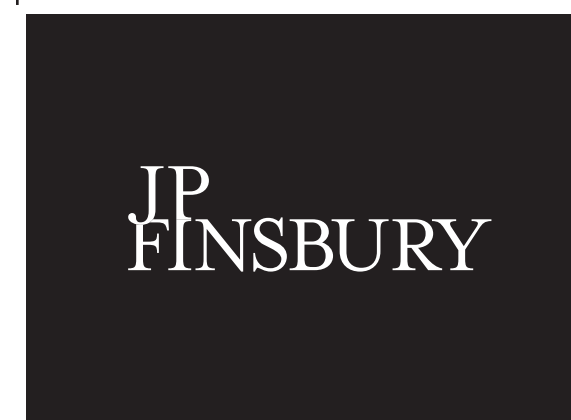
[authenticdesign.com.au](http://authenticdesign.com.au)



## COMMUNE

COMMUNE redefines community-focused programs through a dynamic platform of socially aware events in unique spaces across Sydney. We strive to connect like-minded people to discover, engage and contribute to the city we live in. The soon to be launched COMMUNE Makers Space on Bourke Street will focus on ways to connect through creativity, health, markets, design, workshops and talks.

[thecommune.co](http://thecommune.co)



## JP FINSBURY BESPOKE JOINERS

JP Finsbury Bespoke Joiners is a workshop founded by Adam Price and Kobe Johns. Varied output and community are the driving forces behind the team of seven, based in the Inner West of Sydney.

With strong ties to the interiors community, complemented by a strong reputation amongst industrial designers as the go-to for timber furniture prototyping, head craftsman Adam Price draws on his more than 20 years experience when working with designers to create new objects and interiors.

[jpfinsbury.com.au](http://jpfinsbury.com.au)

# + CONTRIBUTORS



## DAVID HARRISON

David Harrison is a Sydney based design journalist and interiors stylist. He is the founder of the Design daily blog which covers all manner of subjects related to design. He has been contributing to Australian interiors magazines since 1999 and has work published in Belle, Vogue Living, Real Living, Inside Out and Habitus. He also contributes regularly to the Powerhouse Museum's D\*Hub blog.

[designdaily.com.au](http://designdaily.com.au)



## PENNY CRASWELL

Penny Craswell is a design writer, editor and curator and contributing editor of Architectural Review Asia Pacific and Mezzanine magazines. An architecture and design communications specialist, she is Communications and Business Development Manager at Bijl Architecture and runs her own blog The Design Writer. This year, as well as completing her Masters in Design at UNSW, she is co-guest editor (with Peter Salhani) of a special High-Rise issue of Architectural Review Asia Pacific magazine and an invited juror for this year's AIA NSW Architecture Awards (Residential Architecture – Houses New).

[thedesigntwriter.com.au](http://thedesigntwriter.com.au)



## MICHELLE PR

Michelle Fitzgerald has a background in interior design and after specialising in lighting for a number of years, moved into the PR world. Now after a decade in home, design and lifestyle PR, Michelle has established Michelle PR, with clients ranging from up and coming local designers through to international luxury brands.

[michellepr.com.au](http://michellepr.com.au)



## DANNY WEHBE

Danny Wehbe is a graphic designer and art director based in Sydney with a background in advertising, winning various awards while at US Sydney. Since 2012, Danny has specialised in working with architecture and interior design firms including Gensler where he is now Senior Graphic Designer. As part of this work, he has created branding for buildings, restaurants and workplaces, and art directed environmental graphics, photoshoots, video and other collateral for clients such as Dropbox, Expedia and Lendlease.

[be.net/dannywehbe](http://be.net/dannywehbe)



## LOCAL DESIGN

LOCAL DESIGN is a platform for local designers by local designers, providing a unified voice, a marketplace and network for anyone to access. From shopping for a product, to sourcing a creative for a specific project, LOCAL DESIGN is a site that caters to all your design-conscious needs online and offline. LOCAL DESIGN is curated by LOCAL DESIGN founder and stylist Emma Elizabeth and industrial designer Tom Fereday.

[localdesign.com.au](http://localdesign.com.au)



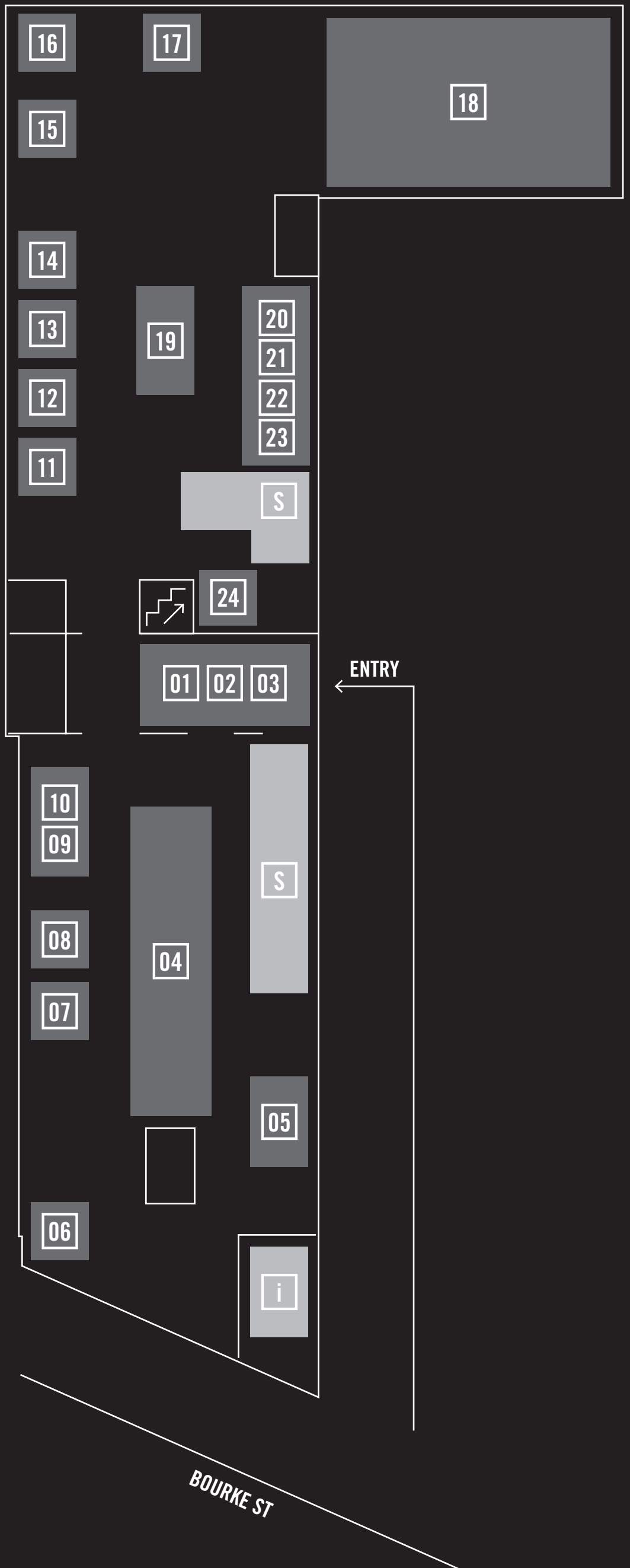
## SAM ALI

Sam Ali, a graphic designer and photographer, is also the founder of COMMUNE, a social enterprise dedicated to fostering collaboration and creativity in the creative industry. COMMUNE makes spaces for bringing people together and are advocates for socially aware initiatives, partnering freelancers with organisations and local businesses, as well as hosting their own events for the community.

[thecommuene.co](http://thecommuene.co)

# + COMMUNE MAKERS 901 BOURKE ST WATERLOO

- 01 MECCA COFFEE
- 02 URBAN WINERY SYDNEY
- 03 YOUNG HENRYS BREWING CO
- 04 ESTABLISHED
- 05 TIMBERMILL
- 06 FRESH PRINCE
- 07 UNDER INTERIOR PRODUCTS
- 08 ILANEL
- 09 MAKERS LANE
- 10 MAKERS LANE
- 11 JONATHAN WEST
- 12 BOARDGROVE ARCHITECTS
- 13 THE FORTYNINE STUDIO
- 14 SIMCOX
- 15 STUDIO LIAM MUGAVIN
- 16 DENNIS ABALOS
- 17 TRENT JANSEN
- 18 LOCAL DESIGN
- 19 AUTHENTIC DESIGN ALLIANCE  
REAL FAKE (TM)  
 Can you spot a real from a fake?  
 Visit the Authentic Design Alliance Real Fake Installation - Instagram the real designs for a chance to win one of the five original Australian/NZ designs. Bassam Fellows, David Trubridge, Ross Gardam, DesignByThem and Coco Flip by Kate Stokes
- 20 O TAMA CAREY
- 21 RISING SUN WORKSHOP
- 22 BLOODWOOD
- 23 CONTINENTAL DELI
- 24 JP FINSBURY BESPOKE JOINERS
- i INFO AND TICKET SALES
- S SEATING





# TALKS AND EVENTS<sup>+</sup>

## IN CONVERSATION WITH TRENT JANSEN: MY MAKING EXPERIENCE IN THE CHOR BAZAAR

Friday 3 June from 4:00 to 5:30pm

Trent recently returned from Mumbai as part of a three-week field study called Porosity Kabari, where he and fellow participants, Richard Goodwin and Ishan Khosla, worked with local makers using only items found in or around the bazaar. Hear Trent's experiences and how they affected his creative process, interviewed by David Harrison, founder of blog Design Daily.

## MAKER MEDITATIONS: SHOW AND TELL

Saturday 4 June from 11:30am to 12:30pm

Bring along an object you have made, moulded, cut, stitched, hammered or crafted. Led by design writer Penny Craswell, who will discuss the importance of making in our rushed, screen-obsessed lives, participants will split into groups to talk about what their object and the act of making means to them. Show and Tell will be led by Andrew Simpson, who has designed everything from high end products to fashion, furniture, medical equipment as well as flat-pack DIY rowboats and sailing boats, and Sarah Rice, an art and design theorist, poet and philosopher who will discuss the why of making.

## SLOW BURN SUPPER CLUB: FOOD AND DRINK, CONVERSATION, IMAGERY AND WITH ADVENTUROUS NEW MUSIC FROM ENSEMBLE OFFSPRING

Friday 3 June from 6:30 to 9:30pm

'Slow' isn't just a speed. In both food and design, it's a movement: an antidote to fast and throwaway. Slow Burn Supper Club brings together Bloodwood, Continental Deli, Rising Sun and O Tama Carey, with Young Henrys Brewing, A. Retief Wines and Mecca Coffee. Designers and makers will speak on their practice while diners feast and celebrate all that is slow and good. Each dish will be based on one of the pillars of the slow food and design movement: Tradition, Ritual, Experiential, Evolved, Slowness, Eco-efficiency, Open source and Technology.

**Ticket price \$120 (+ booking fee may apply) includes five courses with paired drinks** (\$10 ticket discount available when six or more tickets are booked at once)

## ESTABLISHED: DECADES OF MAKING AND DESIGNING DOWN UNDER

Sunday 5 June from 11:30am to 12:30pm

Join the founders of iconic Australian design brands Dinosaur Designs, MUD Australia, Tait and ISM Objects in conversation with David Harrison, editor of blog Design daily. Endless articles and reports claim the maker movement has begun or is in early cycle, however these Australian makers and designers are leading the way both here and abroad and have been at it for more than 20 years. For lovers of these iconic brands as well as those looking to understand more about how to achieve longevity in the market and what it takes to get a brand to London, New York or Singapore.

## IS AUSTRALIA THE WILD WEST OF COPIES? GET REAL, BUY REAL, SUPPLY REAL

Sunday 5 June from 2:00 to 5:00pm

New Zealand designer David Trubridge will be interviewed by Anne-Maree Sargeant, Director of the Authentic Design Alliance, in a frank and positive discussion about authentic design. Many of David's lighting designs – including the iconic Coral light now sold in over 40 countries – have been copied and sold in Australia, the 'wild west of copies'. But now, David has won a legal battle against unauthorised copies of his lighting designs, which are now illegal in Australia. Following this discussion, a design performance will take place inviting the audience to take part and show their feelings about copies and fakes.

## LOCALLY MADE: INNER WEST DESIGN MARKET

Sunday 5 June from 11:00am to 4:00pm

Locally Made is a boutique market showcasing the Best Inner West makers in the fields of locally produced artisan crafts, design, music, art, fashion, food and beverage. The project is aimed primarily to support established and emerging local businesses whom are often exhibiting their product for the first time. The markets are a chance for makers and the public to engage one-on-one for a more enriching buying experience, a mutual appreciation of their craft and direct feedback from customers.

ALL EVENTS HELD ON SITE AT FACTORY DESIGN DISTRICT: COMMUNE MAKERS, 901 BOURKE STREET WATERLOO. TICKETS AVAILABLE FROM [WWW.FDDSYDNEY.EVENTBRITE.COM.AU](http://WWW.FDDSYDNEY.EVENTBRITE.COM.AU) (BOOKING FEES MAY APPLY)



"WE FUSE SIMPLE FUNCTIONALITY,  
CONSIDERED DESIGN AND EXCEPTIONAL,  
CRAFTSMANSHIP INTO EACH OF OUR  
PIECES." – GORDAN AND SUSAN TAIT

# ESTABLISHED: DECADES OF MAKING AND DESIGNING DOWN UNDER

**Installation:**

3-5 June, 11am Daily.

**In conversation:**

5 June 2016. 11:30am tickets from [factorydesigndistrict.com/whatson](http://factorydesigndistrict.com/whatson)

**Exhibition design and curation by David Harrison:**

Sydney based design journalist and interiors stylist. He is the founder of the Design daily blog which covers all manner of subjects related to design.

**Exhibition construction:**

JP Finsbury Bespoke Joiners

ENDLESS ARTICLES AND REPORTS CLAIM THE MAKER MOVEMENT HAS BEGUN OR IS IN EARLY CYCLE, BUT THESE AUSTRALIAN MAKERS AND DESIGNERS ARE LEADING THE WAY BOTH HERE AND ABROAD – AND HAVE BEEN AT IT FOR MORE THAN 20 YEARS.

Presented in two parts ESTABLISHED\_ is a celebration of determination, passion and the resulting longevity of four iconic Australian brands. Curated and styled by David Harrison and commissioned by Kobe Johns of Factory Design District, an exhibition of new work by four of Australia's leading designer/makers will be shown over the three-day inaugural event, complemented by an in-discussion talk with founders of the four iconic brands: **Tait**, **mud australia**, **Dinosaur Designs** and **ISM Objects** – moderated by Harrison.

The four brands have selected for the similar path their founders have walked. All have been designing and making in Australia for more than two decades (DD celebrating their 30th year), have shown consideration for sustainability of environment and local economy, all maintain a design philosophy closely aligned to the making and manufacturing processes of their objects and furniture.

For Australian designed and made products – the road to national and international recognition, multiple retail stores around Australia and abroad is not a smooth one, nor is it well worn. The founders of these brands are not only prolific creatively, they must also continuously embody resilience and determination – and don't forget a whole lot of heart.

MUD AUSTRALIA WAS FOUNDED IN 1994. THE HANDMADE PORCELAIN RANGE, DESIGNED BY SHELLEY SIMPSON, COMBINES CRAFT, COLOUR, CLEAN LINES, PALETTE AND FUNCTIONALITY.



OLSEN AND ORMANDY OF DINOSAUR DESIGNS ARE CONSTANTLY INSPIRED BY NATURE AND THE MATERIALS THAT THEY WORK WITH. THEIR TRAINING AS VISUAL ART STUDENTS AND THEIR LOVE OF THE AUSTRALIAN LIGHT AND LANDSCAPE CAN BE SEEN IN THEIR SENSE OF COLOUR AND FORMS.



ISM OBJECTS' MADAME RUBY LAMP SHOWED THROUGHOUT THE USA, EUROPE AND ASIA IN THE MID-1990S, AND IS CURRENTLY HELD WITHIN THE MUSEUM OF MODERN ART NEW YORK'S PERMANENT COLLECTION.

# + EXHIBITORS



PHOTOGRAPHY: HAYDN CATTACH

## BOARDGROVE ARCHITECTS

Established in January 2016 by Holly Board and Peter Grove, BoardGrove Architects is based in Footscray, Victoria and is currently working on a variety of architecture projects. Their studio hopes to encompass a wide variety of projects from designing large chunks of a city to pieces of furniture whilst maintaining an interest in research and teaching. Two Tables is the first furniture project they have designed and fabricated. It was developed through 1:1 model making with the ambition to design a pair of tables that complement each other, yet have their own personality.

[boardgrovearchitects.com](http://boardgrovearchitects.com) + [@boardgrove](https://www.instagram.com/boardgrove)



## DENNIS ABALOS

Dennis Abalos is an industrial designer based in Sydney whose portfolio ranges from self-produced designs to collaborative work for a wide variety of clients, from furniture, homewares and lighting, to interior and exhibition commissions. His consistently unique work pushes production techniques and materials to innovative forms, fusing the traditional craft-based skills from his Philippine heritage with modern Australian design under the brand, ABALOS – established in 2010. He has achieved industry recognition and won awards in Australia and internationally. Dennis continues to design and collaborate with local brands and international manufacturers.

[abalos.com.au](http://abalos.com.au) + [@abalosdesign](https://www.instagram.com/abalosdesign)



## FRESH PRINCE

Fresh Prince connects people with nature through design. Based in Sydney, Fresh Prince is an emerging design and build collaborative between creative couple Alice and Richie, who share a passion for timber and plants. Drawing on their backgrounds in agriculture and architecture, Richie and Alice create unique spaces, experiences and products for commercial, hospitality and event industries. Their design and build service ranges from bespoke fit-outs and event concepts to custom-made furniture and planter boxes.

[freshprince.com.au](http://freshprince.com.au) + [@freshprincebondi](https://www.instagram.com/freshprincebondi)



## ILANEL

ilanel specialises in bespoke lighting, offering a collection of highly distinctive designs to illuminate a wide variety of spaces from hotels, restaurants and clubs, to communal office spaces and homes. Many of ilanel's designs are interactive, contemporary and playful, making them whimsical and engaging. ilanel's passion for innovative design extends beyond the physicality of mere objects. Design is about experience – a philosophy that encompasses spatial relationships and the creation of touch points between people, artefacts and their evolving environments.

[ilanel.com](http://ilanel.com) + [@ilanel](https://www.instagram.com/ilanel)



## JONATHAN WEST

Jonathan West makes furniture, joinery and objects from his St Peters based studio in Sydney. He designs and crafts one-off commissions, small production runs and site-specific works using wood, metals, concrete and other raw materials. Simple but expressive, Jonathan's works demonstrate playful and tactile characteristics that invite interaction. Collaboration and experimentation are at the heart of his practice as he is connected to a community of designers, makers, artists and friends who provide a constant source of inspiration.

[jonathanwest.com.au](http://jonathanwest.com.au) + [@jonathan\\_a\\_west](https://www.instagram.com/jonathan_a_west)



## JP FINSBURY BESPOKE JOINERS

JP Finsbury Bespoke Joiners is a workshop founded by Adam Price and Kobe Johns. Varied output and community are the driving forces behind the team of seven, based in the Inner West of Sydney. With strong ties to the interiors community, complemented by a strong reputation amongst industrial designers as the go-to for timber furniture prototyping, head craftsman Adam Price draws on his more than 20 years experience when working with designers to create new objects and interiors.

[jpfinsbury.com.au](http://jpfinsbury.com.au) + [@jp\\_finsbury](https://www.instagram.com/jp_finsbury)

# + EXHIBITORS



## LOCAL DESIGN

A curated online hub to find uniquely designed interior products, opinions and ideas by creative professionals within the Australian design scene, LOCAL DESIGN is a platform for local designers by local designers, providing a unified voice, a marketplace and network for anyone to access. With a vision to create a level of market exposure to allow local designers to competitively sell high quality original designs. In time hopefully steering the general public away from a replica market that has a stranglehold on the interiors/furniture market.

[localdesign.com.au](http://localdesign.com.au) + [@local\\_design](https://www.instagram.com/local_design)



## MAKERS LANE

Let Makers Lane introduce you to hundreds of Makers in nine different categories. Our online service saves you valuable time, because our tendering process provides multiple quotes and design proposals based on your project brief. For quality custom-made furniture, lighting, metal work, concrete, joinery – in fact, for anything custom-made – start with a trip down Makers Lane. A world of custom makers at your fingertips.

[makerslane.com.au](http://makerslane.com.au) + [@makers\\_lane](https://www.instagram.com/makers_lane)

### + Forest Co Designs

Introduced to woodwork when he was studying engineering, Christopher Nicholson was involved in a project designing and building a house to be entered into an international design competition. Working on much of the house's timber features, his passion for designing and crafting in the timber medium was revealed. The hugely positive public reaction to the house inspired him to try his hand at making, leading him to start up his own joinery in the Illawarra. His craft is mostly traditional joinery, while working alongside master craftsmen, Chris has honed his skills over the last several years. His style is technical yet modest, and his products reveal a simple elegance in his approach.

### + Little Red Industries

As a kid Natasha Dickins used a tiny hammer to make stuff from offcuts. Now, as a grown-up, she has a workshop full of tools and is still building with offcuts! And plywood, reclaimed timber, Australian hardwoods and sometimes metal. Natasha's design and styling experience comes from 21 years' worth of photoshoots and editing lifestyle magazines including Inside Out, Handyman and Our House amongst others. From her Little Red Industries workshop in Sydney's Inner West, Natasha hosts DIY classes, creates how-to content for media and, of course, builds bespoke furniture.

### + Soul Expressions

For Susan, a painting is often the focal point of any room. It is a visual and visceral expression of the feeling that the room represents. She specialises in creating paintings that are a collaboration between the client's vision and her artistry. Susan loves a painting to have movement, colour and emotional impact. A painting should speak directly to your soul. All paintings are created using quality professional canvases and acrylic paints and then finished with a gloss that will help retain the paintings' vibrancy over time.

### + Dylan Brookes

Dylan Brookes combines photography and collage to create bold and colourful designs. From graffiti-covered laneways and rusty old street signs, to National Park landscapes, Dylan's work presents an unexpected interpretation of the view from the street. Each piece is individually hand made, therefore no two are exactly alike. Many of the pieces are also designed to be hung both portrait and landscape, giving the owner hanging flexibility.

### + Studio Ham

Studio Ham specialise in unique lighting concepts and environmental branding for interior designers and architects. Studio Ham also offers a custom design and fabrication service so clients can tweak the range to get the look you're after. With extensive experience in lighting design and development as well as environmental design, Studio Ham brings a clients' space to life, helping to better communicate brands, or themes throughout a space.

### + Studio Fiveo3

Studio Fiveo3 is a design studio and workshop based in Sydney, specializing in concrete furniture and homewares. They favour a clean and simple aesthetic. Their designs aim to carefully balance the materiality of concrete with the softness of timber and elegance of steel. Studio Fiveo3 draws on over a decade of architectural and furniture design experience and years of exploration with concrete and timber when designing new items for their range or creating custom pieces for clients.

### + My Bespoke Chair

Designer Emma Veiga-Malta has 17 years' experience as a creator of art, fabrics and chairs. Growing up in England's green and pleasant countryside, she drew, doodled, sketched and painted her way through school, art college and university, where she graduated with a BA (hons) in Fashion and Textile Design. Emma's work has been featured in Vogue Living, House & Garden, Home Beautiful, Smart Company, Dynamic Business, The Sunday Times and other media outlets. Product lines: custom fabrics, custom upholstery, custom backdrops and display walls, illustration and artwork.

### + Flitch and Rasp

Flitch and Rasp is the work of Bianca Hayden, a visual artist and sculptor, turned furniture maker. Out of the materials and objects that most people would send to landfill, Bianca creates unique, personal furniture and artworks, that draw from her love of decay and the subsequent patina caused by time. Each and every piece, lovingly hand carved, stays true to the soul of the wood, and its past. The end result is a harmonious layering of history that you can eat off. Flitch and Rasp can produce anything from a custom dining table for the residential market right through to a full commercial fit out with continuity of design and finish.

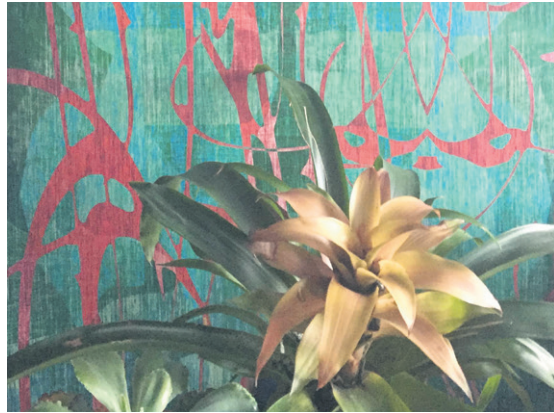
# + EXHIBITORS



## STUDIO LIAM MUGAVIN

Studio Liam Mugavin creates furniture, lighting and spaces. His work pushes the boundaries of design through exploring materials, techniques and form beyond their norms. After living in northern Japan for four years, Liam returned to Australia to establish his studio practice in 2013 at the Jam Factory in Adelaide. Having gained national recognition and a wide client base, Liam relocated his studio practice to Sydney in 2016. A prominent feature of Studio Liam Mugavin is simplicity, complexity, repetition, lines and negative space within geometry.

[liammugavin.com](http://liammugavin.com) + [@liam\\_mugavin](https://www.instagram.com/liam_mugavin)



## SIMCOX

Emelia Simcox was born to artist parents and spent much of her childhood backstage, playing amongst the paint buckets of Sydney's scenery workshops. After working as a scenic artist for Opera Australia and at the Drury Lane paint frames in London's West End, Emelia Simcox returned to Australia to study graphic design and exhibition design. Since graduating, she combines work for the Jenny Kee brand, as well as a freelance career specialising in boutique print and online projects for the arts community. In 2014, she established designer wallpaper, wallcoverings and upholstery studio SIMCOX.

[simcoxdesigns.com](http://simcoxdesigns.com) + [@e\\_simcox](https://www.instagram.com/e_simcox)



## THE FORTYNINE STUDIO

The Fortynine is an object design studio made up of designers Ben Elbourne, Sarah Spackman and Harriet Watts. The studio's work has strong references to the natural Australian landscape and uses local materials. It makes things for everyday use, aiming to foster good local design as an alternative to mass produced, commercial products. The Fortynine Studio's practice involves developing work for exhibition, production and sale, developing their own work, taking commissions, doing custom projects, and collaborating with other designers. Experimenting with new ideas, materials and processes pushes the boundaries of design and craft.

[thefortynine.com.au](http://thefortynine.com.au) + [@thefortyninestudio](https://www.instagram.com/thefortyninestudio)



## TIMBERMILL

Timbermill is a lifestyle brand that offers custom furniture and fit-outs as well as a bespoke furniture and prop rental service. The brand's custom furniture is handcrafted using primarily recycled Australian timber and a range of specialised hardwoods. Created using a personal touch that can't be replicated, these designs enhance the natural grain and often provide a second life for the timber. Timbermill's rentals division offers a bespoke hire collection servicing the greater Sydney region, which is comprised of handcrafted timber furniture pieces, designer steel items and custom display props.

[timbermill.com.au](http://timbermill.com.au) + [@timbermilldesigns](https://www.instagram.com/timbermilldesigns)



## UNDER INTERIOR PRODUCTS

Kristian Aus is a product designer based in Sydney, Australia. Kristian works as a consultant for brands looking to create new and innovative physical products via his studio AUTUMN. He also creates small runs of unique products through his brand UNDER Interior Products. Industrial processes, digital manufacturing and minimising waste are the three main creative sources for new work. All three create limitations and restrictions that help to drive original ideas and solutions. Kristian's work has been exhibited and licenced in Europe, the USA, Australia and Asia.

[underthere.com.au](http://underthere.com.au) + [@kristian\\_aus](https://www.instagram.com/kristian_aus)



## BLOODWOOD

bloodwood is located in the former Newtown Conservatory at 416 King Street Newtown. The interior has been transformed by Matt Woods Design to reflect the inner west suburb, melding raw and industrial finishes with an emphasis on recycled and reclaimed materials. bloodwood is owned and run by chefs Mitchell Grady and Claire van Vuuren. Together they create a seasonal menu designed for sharing, cooking food that they love to eat, sourcing the best produce they can find.

[bloodwoodnewtown.com](http://bloodwoodnewtown.com) + [@bloodwoodntown](https://www.instagram.com/bloodwoodntown)

# + EXHIBITORS



## CONTINENTAL DELI

Continental is the realised passion for a neighbourhood deli, offering the most interesting, rare and delicious cheeses and charcuterie as well as an impressive range of tinned delicacies; anchovies from the Bay of Biscay, clams and cockles from Galicia, sardines from France. Continental Deli is, however, most proud of the items they have canned themselves from incredible local produce. Founded by Elvis Abrahamowicz and Joe Valore of Porteño, and Jesse Warkentin and Michael Nicolian (of Bodega and Gardel's Bar, respectively).

[continentaldelicatessen.com.au](http://continentaldelicatessen.com.au) + [@continentaldeli](https://www.instagram.com/continentaldeli)



## MECCA COFFEE

Mecca opened its doors in the CBD with the simple goal of serving quality coffee without any pretence. It was all about the product, served by passionate hospitality friends who wanted to take the quest for quality into their own hands. Eleven years later, Mecca's CBD site remains one of the busiest and best-loved coffee spots in Sydney. Mecca Coffee has retained its position as a loved name in specialty coffee thanks to an always-learning, DIY approach, building strong relationships and collaborating with true innovators around the world.

[meccacoffee.com.au](http://meccacoffee.com.au) + [@meccacoffee](https://www.instagram.com/meccacoffee)



## O TAMA CAREY

O Tama Carey began her cooking career quite by accident, after finding herself in a kitchen in London about 18 years ago. Since then, she has worked her way through many kitchens learning to cook food of diverse cultures. Her last major project was at the helm of modern Italian restaurant Berta where she started the Sagra dinners, a weekly-changing menu focusing on a particular seasonal ingredient, and received her Time Out Chef of the Year award. She is currently happy being an international gypsy chef and hatching plans while writing for SBS Food Online.

+ [@missotama](https://www.instagram.com/missotama)



## RISING SUN WORKSHOP

Opening early 2016, Newtown's Rising Sun Workshop is Sydney's first communal workspace for motorcycle enthusiasts. It's there to provide members with all the space, tools & knowledge they need to apply their skills, build their dream and truly take ownership of their passion. A collaborative space, Rising Sun also houses a kitchen, cafe and bar, championing old ideas, new techniques and local producers.

[risingsunworkshop.com](http://risingsunworkshop.com) + [@rising\\_sun\\_workshop](https://www.instagram.com/rising_sun_workshop)



## URBAN WINERY SYDNEY

Urban Winery Sydney is a dream more than a decade in the making. It is Australia's first fully-functioning city-based commercial winery, with a cellar door in Sydney's inner west suburb of St Peters. It is a commercial winery that processes at least 50 tonnes of grapes annually, mainly for the A.Retief label which sources fruit from NSW cool climate regions of Tumbarumba, Gundagai and the Hilltops.

[urbanwinerysydney.com.au](http://urbanwinerysydney.com.au) + [@urban\\_winery\\_sydney](https://www.instagram.com/urban_winery_sydney)



## YOUNG HENRYS BREWING CO

Like most good stories, this one started over a beer. Meeting on opposite sides of the bar, Richard Adamson and Oscar McMahon got talking. It turned out they both shared a love of beer and a view that the Sydney beer scene was behind the times. Since Richard knew how to brew and Oscar knew all the ins and outs of hospitality, they figured they could do more than just talk. In 2012 the green light was given for an industrial warehouse space in Newtown. With the help of a few friends, a small brewing kit was purchased and Young Henrys was officially in business.

[younghenrys.com](http://younghenrys.com) + [@younghenrys](https://www.instagram.com/younghenrys)

# COMMUNE

Good spaces for good people.

*Welcome to our Hood*

**901 BOURKE ST WATERLOO**

**MAKERS | MARKETS | STUDIOS | EVENTS | WELLNESS**

---

 [THECOMMUNE.CO](https://thecommune.co)

 [THECOMMUNE](https://www.instagram.com/thecommune)

 [THECOMMUNECO](https://www.facebook.com/thecommuneco)